

We offer a wide range of leaflets which detail our policies, procedures and good practice. These are available on request.

This document is about Making a Complaint.
Need help in your own language?

French

Pour vous assister en votre propre langue

Farsi

برای کمک به زبانتان

Portuguese

Assistencia na sura propria lingua

Arabic

لمساعدتكم في لغتكم

Somali

Luqadaadoo lugugu caawinaayo

Kurdish

بۆیارمه تیدان به زمانی خوۆت

 0121 633 2100

Harden Housing Office

28 Pickford Street, Digbeth, Birmingham B5 5QH

 0121 633 2100

email: harden@wmhousing.co.uk

Repairs Line (24hrs) 0845 600 3441

WEST MERCIA HOUSING GROUP



hardenhousing.co.uk



kemblehousing.co.uk

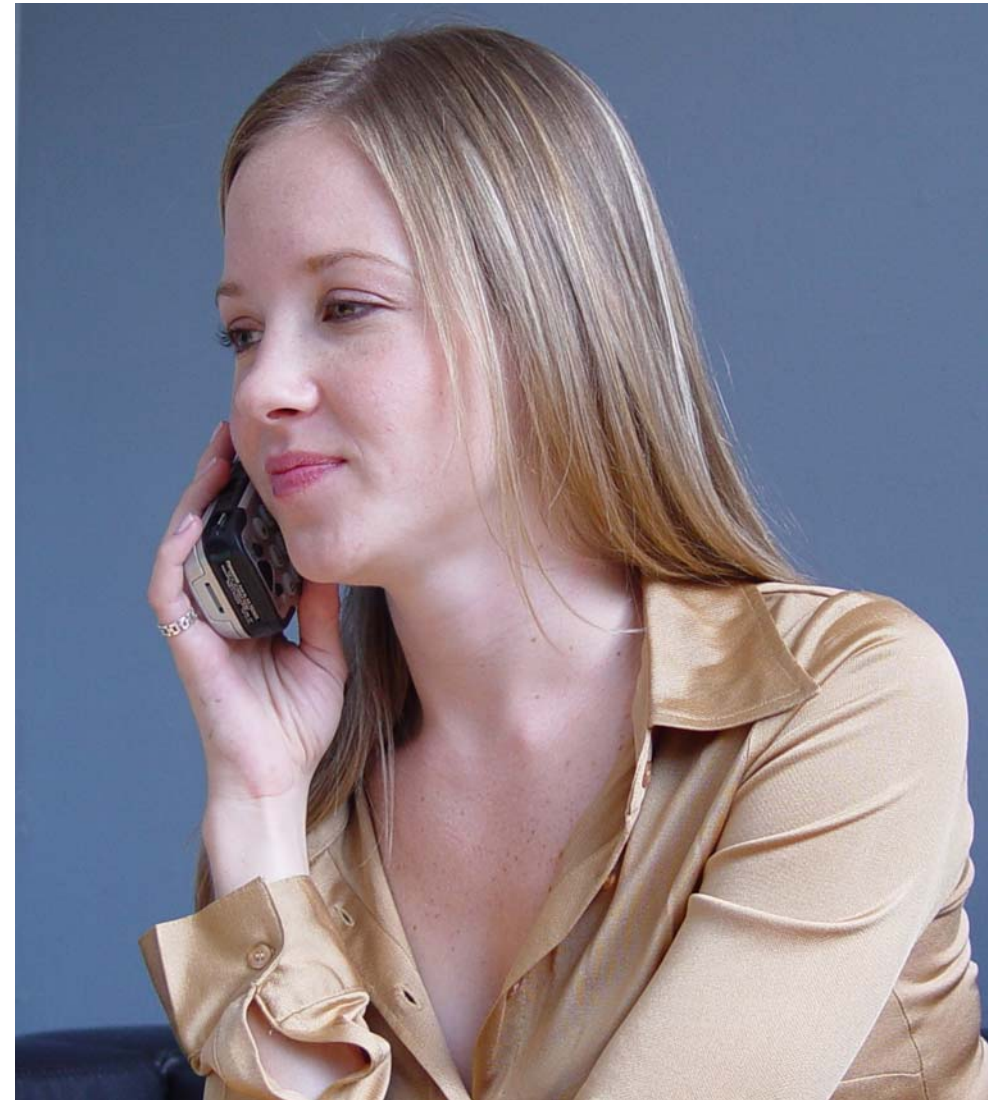


nexushousing.co.uk



whitefriarshousing.co.uk

www.wmhousing.co.uk



Tell us What you Think
Comments, Compliments
and Suggestions



 **business for neighbourhoods**



